

FUTURE
TE & COFFEE 2020
SUMMIT AND EXPO

EXHIBITOR INFORMATION DECK

CO-ORGANISED BY TEAPASAR & CEMS

POWERED BY  ProfilePrint™

general information

INTRODUCTION

FUTURE TEA & COFFEE 2020 SUMMIT AND EXPO

CO-ORGANISED BY



With a combined track record of over **20,000 visitors, 7,000 trade visitors, 220 exhibitors from 30 countries and \$30m in sales** in 2019 by teapasar and Cafe Asia, we invite you to a powerful new platform, Future Tea & Coffee Summit and Expo 2020 - **an enhanced and transformed tradeshow integrating new digital experiences** built to circumvent potential disruptions and embrace new paradigms in the food supply chain systems. This event enables you to **match, source and sell better**, without the physical limitations of borders.

general information

INTRODUCTION

FUTURE TEA & COFFEE 2020 SUMMIT AND EXPO

futureteacoffee.com

24 to 26 June 2020
10am to 6pm (GMT)

11 to 13 Nov 2020
10am to 6pm (GMT)

program

INTRODUCTION



FUTURE TEA & COFFEE 2020

SUMMIT AND EXPO



THOUGHT LEADERSHIP

Hear from **industry leaders** and participate in engaging discussions centred around new technologies and **innovative solutions** with the potential to solve the **tea & coffee industry's most pressing challenges**.



DIGITAL TRADE SHOW

Bringing together exhibitors and visitors on a **dynamic virtual B2B tradeshow** - incorporating robust educational tools that enable exhibitors to share **diverse and engaging content** and **powerful live video functions** to build trust; increase buyer satisfaction and facilitate a richer engagement.



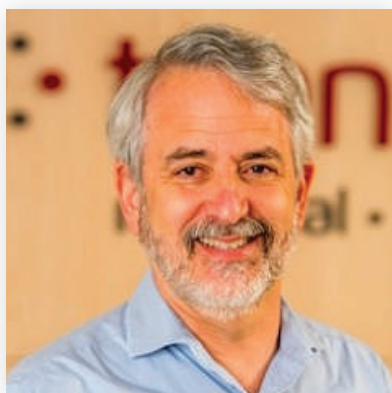
POWERED BY PROFILEPRINT™ DIGITAL FINGERPRINT TECHNOLOGY

A **digital food standard** based on rapid and non-destructive fingerprinting technology, enabling buyers and sellers to **ascertain grade and quality without the need for physical samples** to transact with trust

speakers

THOUGHT LEADERSHIP

Tentative agenda:



Mr Steve Rhodes
Chairman
The Trendlines Group

Keynote



Dr Tan Siow Ying
Head of Innovation and Research
Pepsico

Future of Sourcing for New Ingredients using
Technology



Mr Rehan Amarasuriya
CEO
Tea Tang

Culture, Technology and Tea



Ms Stephanie Lin
Global Vice President
Happy Lemon

Driving Forces and Innovations in Bubble Tea



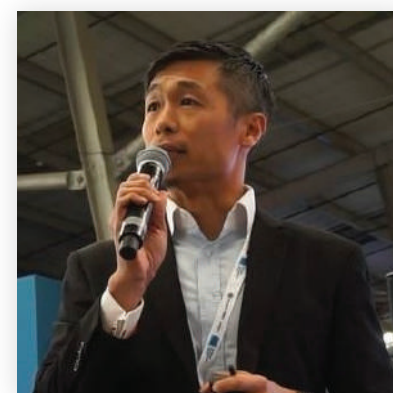
Professor Zhou Weibiao
Head of Food Science & Technology
NUS

Metabolomic Fingerprint Research



Mr Mason Tan
CEO
Garden Impact Investment

Growing the Next Generation of Farmers
through Impact Capital



Mr Alan Lai
CEO
ProfilePrint™

Digital Food Fingerprint to Steer the Future of
Food and Beverage



Pak Iwan Effendi
Chairman
Sustainable Coffee Organisation of Indonesia

Innovations and Empowering Coffee Farmers
through Digitalisation

for exhibitors: key features

DIGITAL TRADE SHOW

SAMPLES SCANNED (1/5)

Sample ID: #12101
Date Scanned: 9 April 2020

Category: Tea
Origin: Sri Lanka
Type: Ceylon Black Tea
Grade: OP1, OP
Key Words: Champagne

Top 3 Matches

6793, TEAZYTEA
500KG | 2 months | US\$3-5/kg
RFQ | Request for Sample

6792, SILK BREW
500KG | 2 months | US\$3-5/kg
RFQ | Request for Sample

6794, BREWOLUTION
500KG | 2 months | US\$3-5/kg
RFQ | Request for Sample

EFFECTIVE PRODUCT MATCHING WITH DIGITAL FINGERPRINTING

ProfilePrint™ is a digital fingerprint technology that will allow you to get your products* **scanned and matched** to buyers' requests for **higher conversion**. Reach out to your target market with samples and brand collateral.



BRINGING BUYERS TO YOU WITHOUT TRAVELLING

Set up your **virtual booth for lead generation and conversion** through a visually-rich environment. Educate potential buyers about your products and services through robust digital collaterals such as videos and product photos

Tea Tang
Sri Lanka
Tea Manufacturing and Export

EXHIBITOR | SPEAKER

ABOUT THE COMPANY

MEET THE TEAM

Rehan Amarasuriya, CEO
Chandana De Silva, Director
Allan Bartholomeusz, Sales Manager
Daiisha Pramud, Sales Manager
Dhanushka Sanjeeva, Sales Executive

Speak to the Team
Send Message

Headquartered in Sri Lanka, the Tea Division of the B P de Silva Group encompasses Tea Tang and 1872 Nava Tea Company in Singapore, while another subsidiary, Tea Tech Services, brings under this umbrella, a state of the art tea cleaning and blending plant in Sri Lanka.

REPLICATING THE PHYSICAL B2B EXPERIENCE ONLINE

Powerful live video engagement that helps build trust. If you are busy, buyers will be waitlisted and prompted when you are available to chat

profileprint™: the technology

FTC 2020 - POWERED BY PROFILEPRINT™



POWERED BY PROFILEPRINT™

ProfilePrint™ is a food ingredient analysis SaaS (software-as-a-solution) platform, based on our patented non-destructive A.I. food fingerprinting technology, allowing rapid authentication and characteristics prediction such as taste profiles, empowering B2B users to match, source and sell better.

[WATCH IN ACTION](#)

PROFILEPRINT™ XCHANGE

Register for the event and receive access to ProfilePrint™ Xchange - a B2B platform, and free scanning of your samples to best match buyers' requirements.

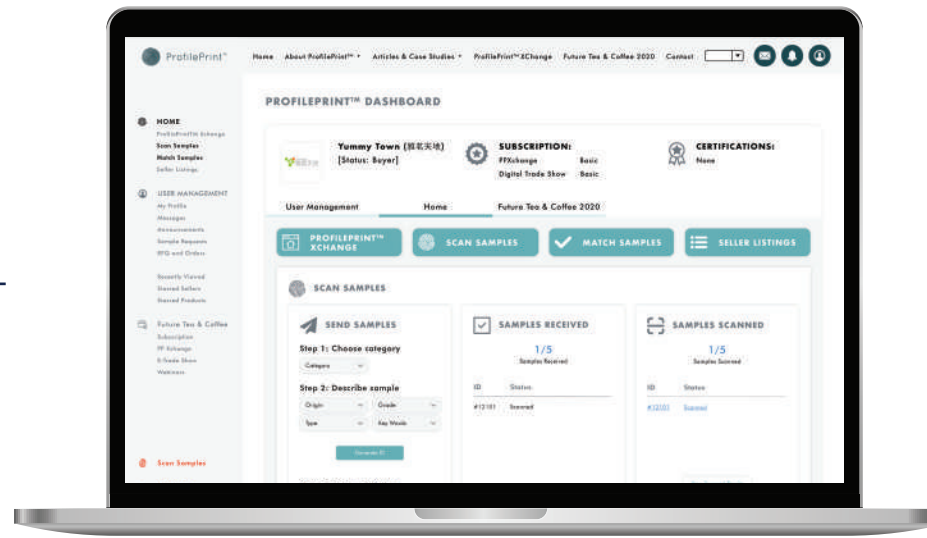
profileprint™: the technology

FTC 2020 - POWERED BY PROFILEPRINT™



**PROFILEPRINT™
ANALYSER**

Metabolomic food sensor that creates a unique fingerprint for every food product



THEPROFILEPRINT.COM

Global B2B food ingredients platform to match, buy and sell



USERS

Buyers and sellers within the food ingredients industry



MATCH



Digital food fingerprinting that assures product consistency and accuracy



BUY



Source food ingredients directly from growers globally



SELL



Reach out to the global market directly, skipping expensive middlemen

profileprint™: the technology

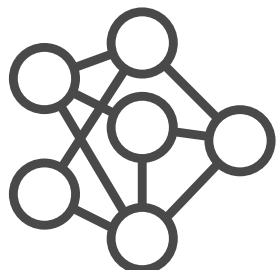
FTC 2020 - POWERED BY PROFILEPRINT™

HOW IT WORKS



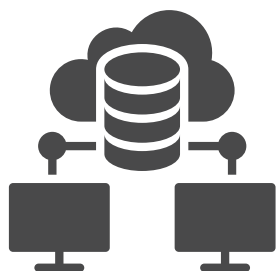
Capture

Proprietary portable device captures metabolomic signatures



Process

Proprietary algorithm developed based on a combination of chemometrics and A.I.



Match

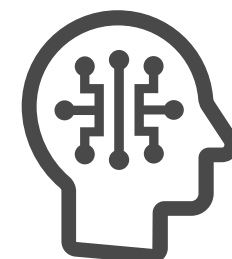
Encrypted cloud-based database of ProfilePrint™

KEY ADVANTAGES



Speed & Accuracy

ProfilePrint™ takes just a few seconds to ascertain quality without the need for human-tasting



DIY Artificial Intelligence

Users can self-create A.I. models easily by training it without prior technical training



Portability

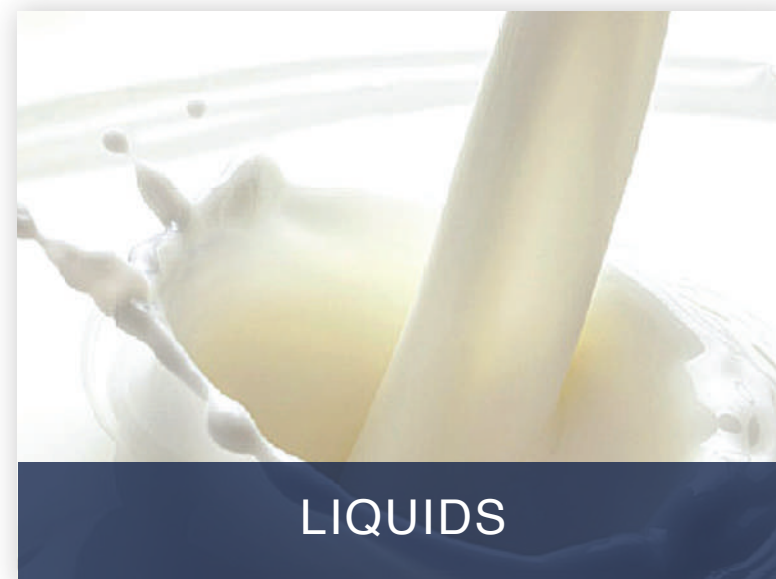
Web-based software with a device easily hand-carried in a travel bag

profileprint™: product verticals

FTC 2020 - POWERED BY PROFILEPRINT™

PRODUCT VERTICALS

ProfilePrint™ has been used for verticals such as tea, coffee, cocoa, grains, herbs & spices, food additives, liquids, and non-organic materials used for preparation of food and drinks and also manufacturing in the F&B industry. If your food ingredients fall under any of these categories, you will be able to leverage on ProfilePrint™'s product matching capabilities.



why participate?

FOR EXHIBITORS

FUTURE TEA & COFFEE 2020 SUMMIT AND EXPO

Sell your products and services

Gather new leads

Get matched with international buyers

Higher conversions due to ProfilePrint™'s matching

Source new opportunities

Gain knowledge and insights

Extensive promotional and marketing campaigns

exhibitor profile

FOR EXHIBITORS



TEA

Straight Tea
Blended Tea
Accessories
Brewing Equipment
Extracts
Infusers
Leaf Roasting Machinery
Processing Machines
Tea Filter Paper
Teabag Paper
Specialty Suppliers



COFFEE

Beans
Accessories
Coffee Filter Paper
Brewing Equipment
De-cafeinators
Dry/Wet Processing Machinery
Specialty Roasters



COCOA

Cocoa Beans
Cocoa Grinders
Roasting Machines
Specialty Suppliers



F&B SUPPLIES

Chocolate
Dairy
Carbonated Beverages
Desserts
Extracts
Flavours
Fruit Juices
Ice Cream
Liquor, Wine and Spirits
Sauces
Snacks
Sugars, Syrups and Sweeteners

exhibitor profile

FOR EXHIBITORS



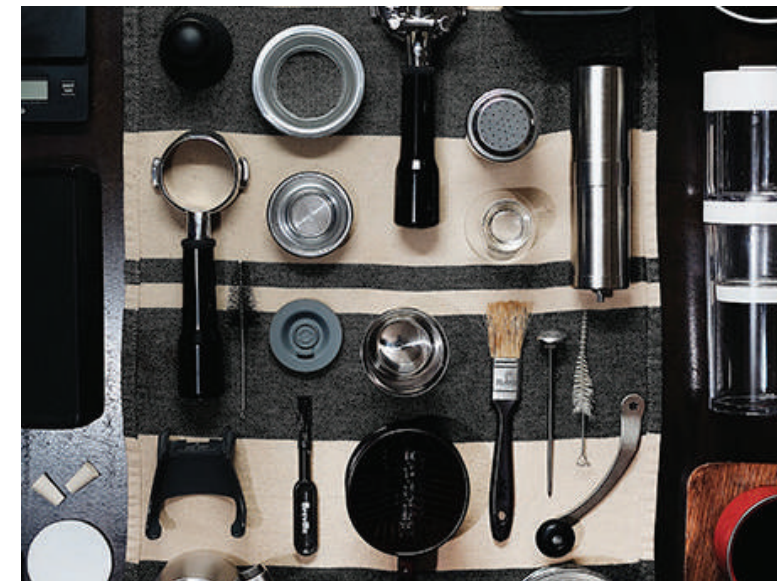
MACHINERY & EQUIPMENT

Energy, Ventilation & Air-conditioning
Filters
Laboratory & Measuring Instruments
Refrigeration Systems
Showcases & Displays
Vending Machines
Water Filters



PACKAGING/PAPER

Capsules
Labels
Packaging Machines & Technology
Pods



FURNITURE & ACCESSORIES

Barista Tools
Catering Equipment
Corporate Gifts
Soft & Hard Furniture Fittings
Tableware & Utensils



SERVICES & OTHERS

Cleaning & Hygiene
Franchising & Licensing
Interior Design
Logistics
Pest Control Process Optimisation
Research & Development
Training & Education
Uniform Supplies

visitor profile

FOR EXHIBITORS



Engage and meet owners, operators, baristas, chefs, franchisors, purchasers, entrepreneurs, traders, and industry professionals from:

Airlines
Bakeries
Banquets
Bars
Bistros

Cafes
Canteens
Catering
Clubs
Coffeeshops

Confectionery
Country Clubs
Cruises
Fast Food Outlets
Food Courts

Hotels
Hyper/Supermarkets
Pubs
Retail
Resorts
Restaurants
Venues

exhibitor tiers

FOR EXHIBITORS

	TIER 1 - ONE SHOW	TIER 2 - TWO SHOWS
ProfilePrint™ Xchange		
Access to ProfilePrint™ Xchange	1 month Premium FREE (RRP \$50 SGD/month)	3 months Premium FREE (RRP \$50 SGD/month)
Digital Trade Show		
Profileprint™ scans and matching*	Up to 20	Up to 100
Participation in events	June only	June and November
Number of users	2	5
Access global buyer market for your industry	✓	✓
Access to Keynote Speeches	✓	✓
Uploading of SKUs	5	Unlimited
Message and video calls with buyers	✓	✓
Allow for sample requests during event	✓	✓
Logo on Event Homepage	✓	✓
30-second introductory video insert	✓	✓
Live customer service support	✓	✓
Speaker rights**	✗	✓
Logo placement during Webinar	✗	✓
Early Bird Price (ends on 30th May 2020)	\$600 SGD	\$1,000 SGD

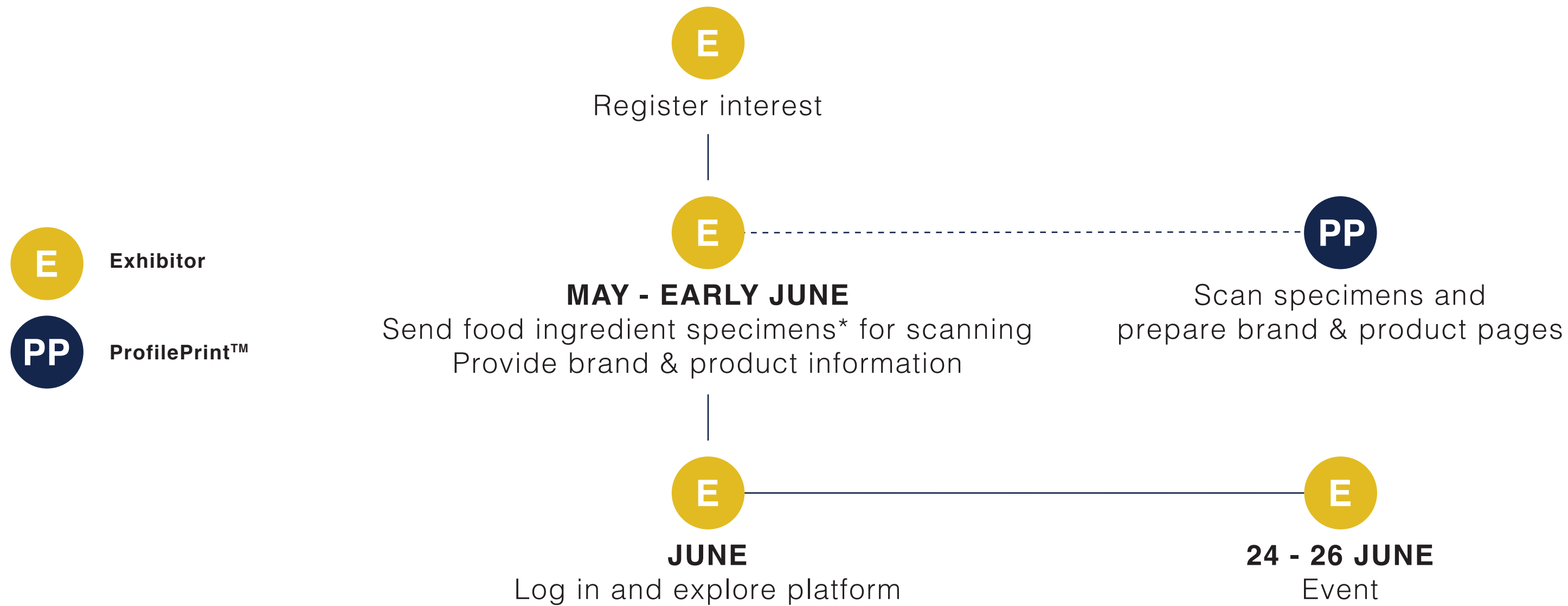
Rates after 30th May 2020: Tier 1 (\$900), Tier 2 (\$1,800)

* For food ingredients only

** Webinar topics must focus on areas of new technology and innovation (launched within the last 6 months). At organisers' discretion.

key dates

FOR EXHIBITORS



* Applicable for food ingredients only. Please send specimens by 1st week of June.

organiser: CEMS

ORGANISERS OF CAFE ASIA



Established in 1980, CEMS is a regional organiser with a global perspective. A key player in the Meeting, Incentive, Convention and Exhibition (MICE) industry in Singapore, CEMS has vast knowledge and experience in organising and managing exhibitions, conferences and other special events for government agencies, associations and private enterprises, with business activities spanning across many countries in ASEAN including Singapore, Thailand, Malaysia, Myanmar, Cambodia, Vietnam and the Philippines, China in North Asia, India, Sri Lanka, Bangladesh and Pakistan in the South Asia and, in Africa. In October 1997, CEMS achieved the distinction of being the first professional conference and exhibition organiser in Singapore to obtain the ISO 9002 certification. For the past decade, CEMS has formed strategic partnerships with both local and international players to achieve mutually desirable goals in the MICE industry.

KEY EVENTS



organiser: teapasar

MULTI-BRAND TEA MARKETPLACE AND EXPERIENCES



Based in Singapore, teapasar is a phy-gital event company focusing on organising marketplaces & food festivals - integrating both the physical and digital experience. teapasar.com is the first global tea marketplace, featuring local and international tea brands, as well as exclusive and rare teas sourced directly from tea farms.

teapasar is powered by ProfilePrint™ – a taste mapping and metabolic fingerprinting technology. ProfilePrint™ is a food ingredient analysis SaaS (software-as-a-solution) platform, based on our patented non-destructive A.I. food fingerprinting technology, allowing rapid authentication and characteristics prediction such as taste profiles, empowering B2B users to match, source and sell better.

teapasar also organises B2C marketplaces, including the the last three Singapore Tea Festivals - drawing over 50,000 visitors culminatively, as well as the i'mable Gift Market 2019.

KEY EVENTS



AWARDS



Mitsui Chemical Research Award 2019 Techplanter (ASEAN)

Shortlisted 20 Microsoft for Start-up 2019 (Singapore)

Shortlisted 10 Global Table Seeds and Chips 2019

Enterprise Singapore SGTECH Grant 2019 Awardee

Top 25 Global Startup-O' Fasttrack' Season 10

Shortlisted 20 Future Food Asia 2019

registration

REGISTER FOR FREE

FUTURE TEA & COFFEE 2020 SUMMIT AND EXPO

Interested applicants can fill in a form here.

[REGISTER NOW](#)